



PUBLIC CONSULTATION INFORMATION

A landscape photograph showing a valley with rolling hills in the background. In the middle ground, a large, rectangular, green-roofed structure is visible, which is the proposed facility. The foreground is filled with lush green trees and fields.

THE PROPOSED BUTTINGTON ENERGY RECOVERY FACILITY

14 SEPTEMBER 2020 - 26 OCTOBER 2020

ALSO AVAILABLE IN WELSH UPON REQUEST

0800 130 3353

info@broadenergywales.co.uk

www.broadenergywales.co.uk

INTRODUCTION

This booklet outlines our development proposals for Buttington Energy Recovery Facility.

At this stage, we are introducing our vision for the scheme as part of the statutory pre-application process based on guidance from the Planning Inspectorate.

Following this consultation, we will take into consideration all the feedback received through this process to enable us to develop our submission. A Consultation Report will then be prepared, which will set-out the next steps and respond to the feedback received from consultees.

We are consulting at a time when the need to protect everyone's health means mass consultation events are not possible. So, we

are asking for your views in ways which may be different to other consultations you may have attended.

We have given careful thought and consideration to ensure that everyone from all ages and backgrounds in the surrounding community are given the opportunity to respond to our consultation. Within this booklet we outline details about the scheme and explain how you can provide feedback and respond.

BENEFITS OF THE BUTTINGTON ENERGY RECOVERY FACILITY



CREATION OF
UP TO 30
PERMANENT JOBS



167,000 TONNES OF
NON-RESIDUAL WASTE
PROCESSED EACH YEAR



13-MEGAWATTS
OF ELECTRICITY
GENERATED

WHO IS BROAD ENERGY?

Broad Energy (Wales) Limited, known as Broad Energy, is the Applicant and is part of Broad Group (UK) Limited.

Broad Energy is an independent developer of renewable energy projects across multiple applications including: Biomass, Energy from Waste, Solar PV and most recently, Battery Storage.

The team at Broad Energy has forged close working relationships with industry leaders in the renewable energy market sector, enabling the company to deliver a one-stop-shop for businesses looking to maximise the land value opportunities through the development of sustainable energy infrastructure.

Building on this ethos, Broad Energy (Wales) Limited was established by Broad Group with the intention of delivering the proposed Energy Recovery Facility at Buttington.

Leading developer of renewable energy, Low Carbon, has partnered with Broad Energy to finance the project through to completion. Low Carbon is a trusted and professional partner, which specialises in managing energy projects across the UK. Their highly experienced team will be working with Broad Energy, delivering a future proof facility that will continue to

reduce non-recyclable material from being sent to landfill, with a collective focus on identifying and implementing operational and technical improvements.

Broad Energy has established a strategic partnership with global leader, Hitachi Zosen Inova, to design, build, and operate the Buttington Energy Recovery Facility, supporting the generation of renewable energy using non-recyclable waste.

Hitachi Zosen Inova are vastly experienced and have an annual turnover of over \$3.7bn. Globally, the company has built and continue to develop 77 energy from waste treatment plants since 2000. From their existing plants, Hitachi Zosen Inova has the capacity to process over eight million tonnes of waste, generating over 800MW of electricity.



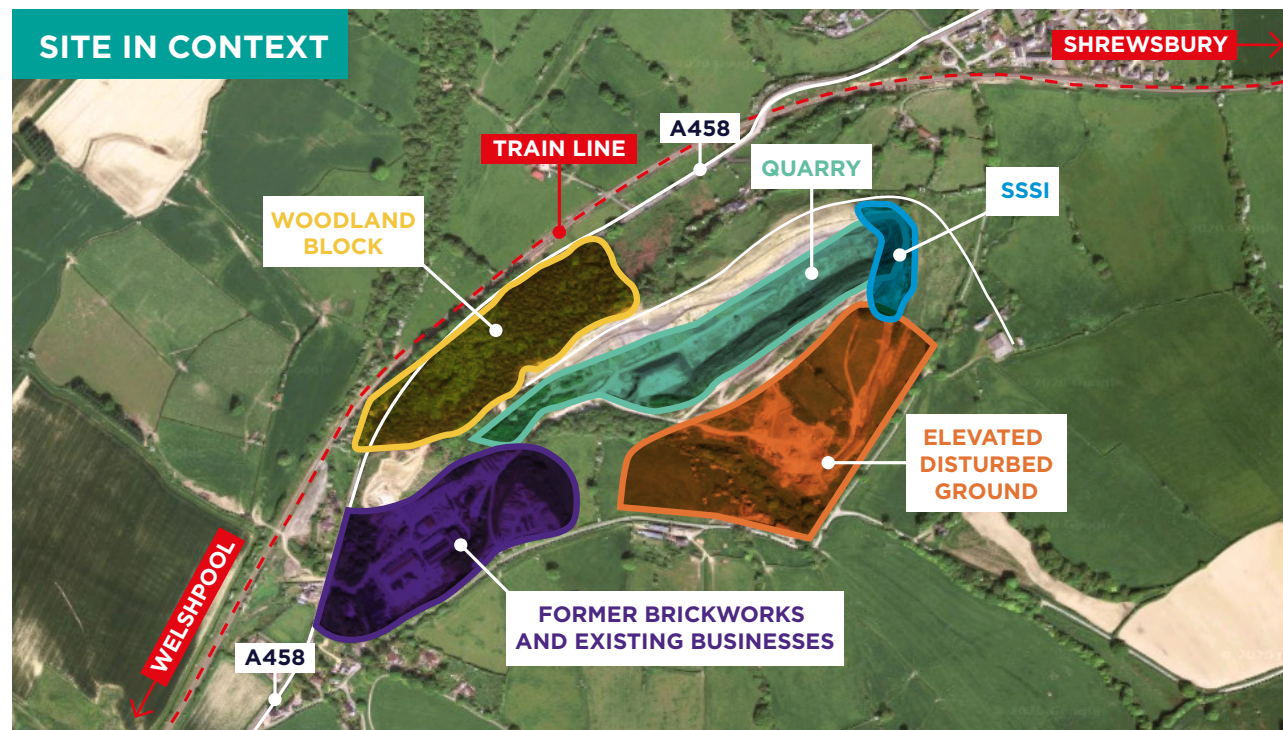
0800 130 3353

info@broadenergywales.co.uk

www.broadenergywales.co.uk

OUR VISION FOR BUTTINGTON ENERGY RECOVERY FACILITY

Buttington Energy Recovery Facility will significantly reduce the amount of waste sent to landfill and export power to the National Grid.



The Energy Recovery Facility has been designed to generate around **13-megawatts of low carbon and renewable energy** through the thermal treatment of up to **167,000 tonnes** per year of non-hazardous, non-recyclable, household, residual, commercial and industrial waste.

Energy generated will be exported to the National Grid to help provide greater security to supplies. It is hoped that as the site develops heat could be generated to supply local agricultural industry, businesses, and new developments — cutting operating costs, whilst making use of a by-product.

Because of its energy output (greater than 10MW), the scheme is classified as a Development of National Significance.

This means we need to apply to the relevant Welsh Minister for development consent, instead of the Local Planning Authority.

The scheme is expected to generate up to **300 jobs** throughout the construction process and employ **30 permanent staff** once the facility is fully operational.

It is hoped that a local jobs fair would be held, giving those who currently live and work in the area an opportunity to learn more about the employment positions which may be available.

DEVELOPMENTS OF NATIONAL SIGNIFICANCE PROCESS

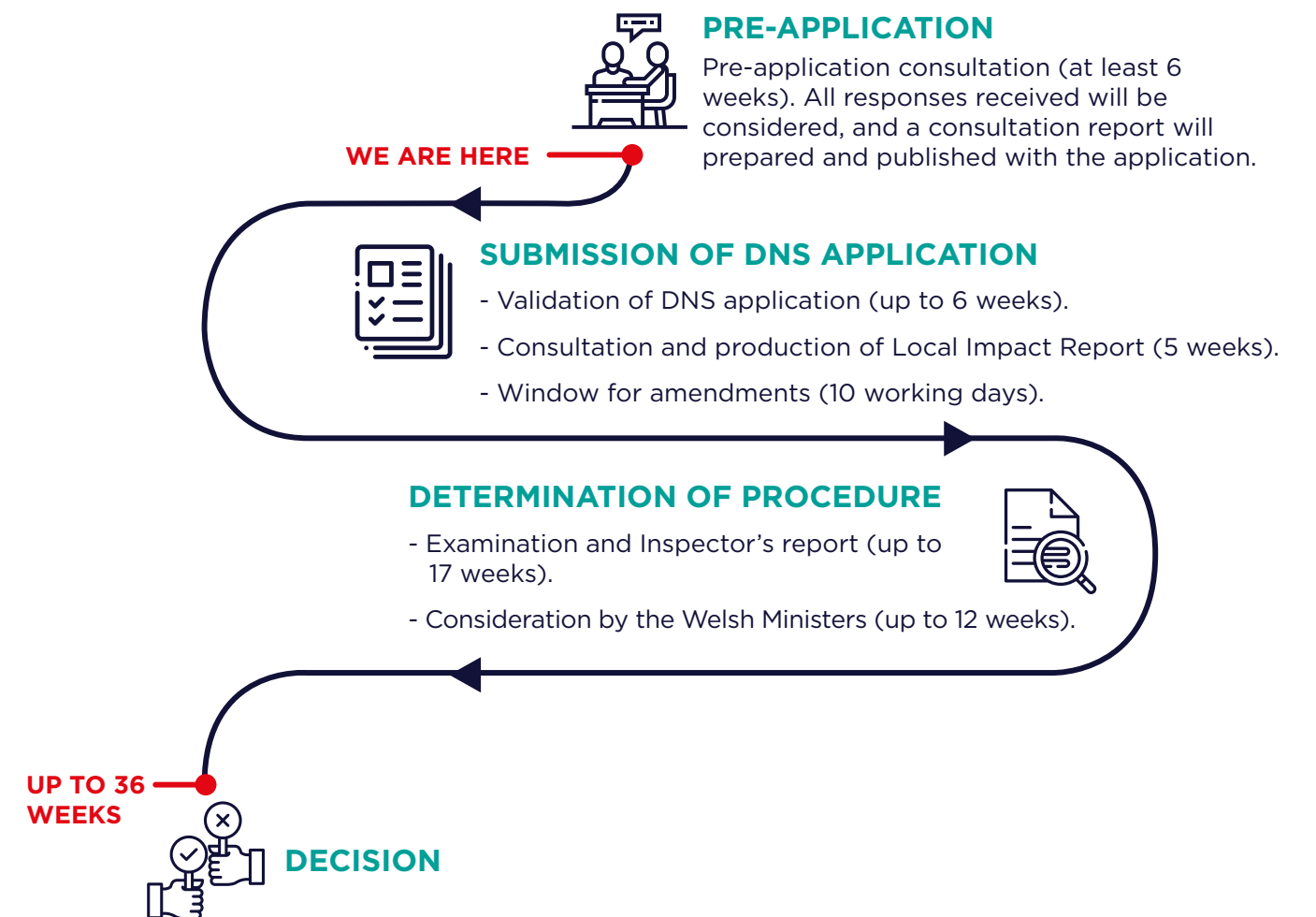
Because of its energy generating capacity, the Buttington Energy Recovery Facility application is considered a Development of National Significance.

Developments of National Significance are determined by Welsh Ministers. The Planning Inspectorate will produce a report following the application, which will set out their conclusions and recommend whether to grant the planning application. The final decision lies with the relevant Welsh Minister as to whether to grant permission.

The pre-application consultation is a statutory requirement of all developers, and this is the current stage of the Buttington Energy

Recovery Facility proposal. The Planning Inspectorate has accepted that the proposal is a Development of National Significance.

The Energy Recovery Facility will require an Environmental Permit issued by the regulator in order to operate and this will be strictly regulated by Natural Resources Wales under the Environmental Permitting (England & Wales) Regulations 2016, Industrial Emissions Directive, and Best Available Techniques Reference Document.



WHY IS THE ENERGY RECOVERY FACILITY NEEDED?

Buttington Energy Recovery Facility will help reduce the amount of waste sent to landfill and generate low carbon energy.

Across Wales, energy requirements are changing. The final coal-fired power plant in Wales closed in December 2019, and in turn, there is an increased need for low carbon energy generation.

The Welsh Government, in its Beyond Recycling report (2019), outlined its ambition to become a zero-waste nation by 2050. Coupled with the ambition to reduce greenhouse gas

emissions by at least 80% by 2050, set out in the Environment (Wales) Act, the need for innovative solutions is ever-present.

Buttington Energy Recovery Facility will considerably reduce the amount of waste sent to landfill and provide a much-needed facility for businesses in Powys and the surrounding area.

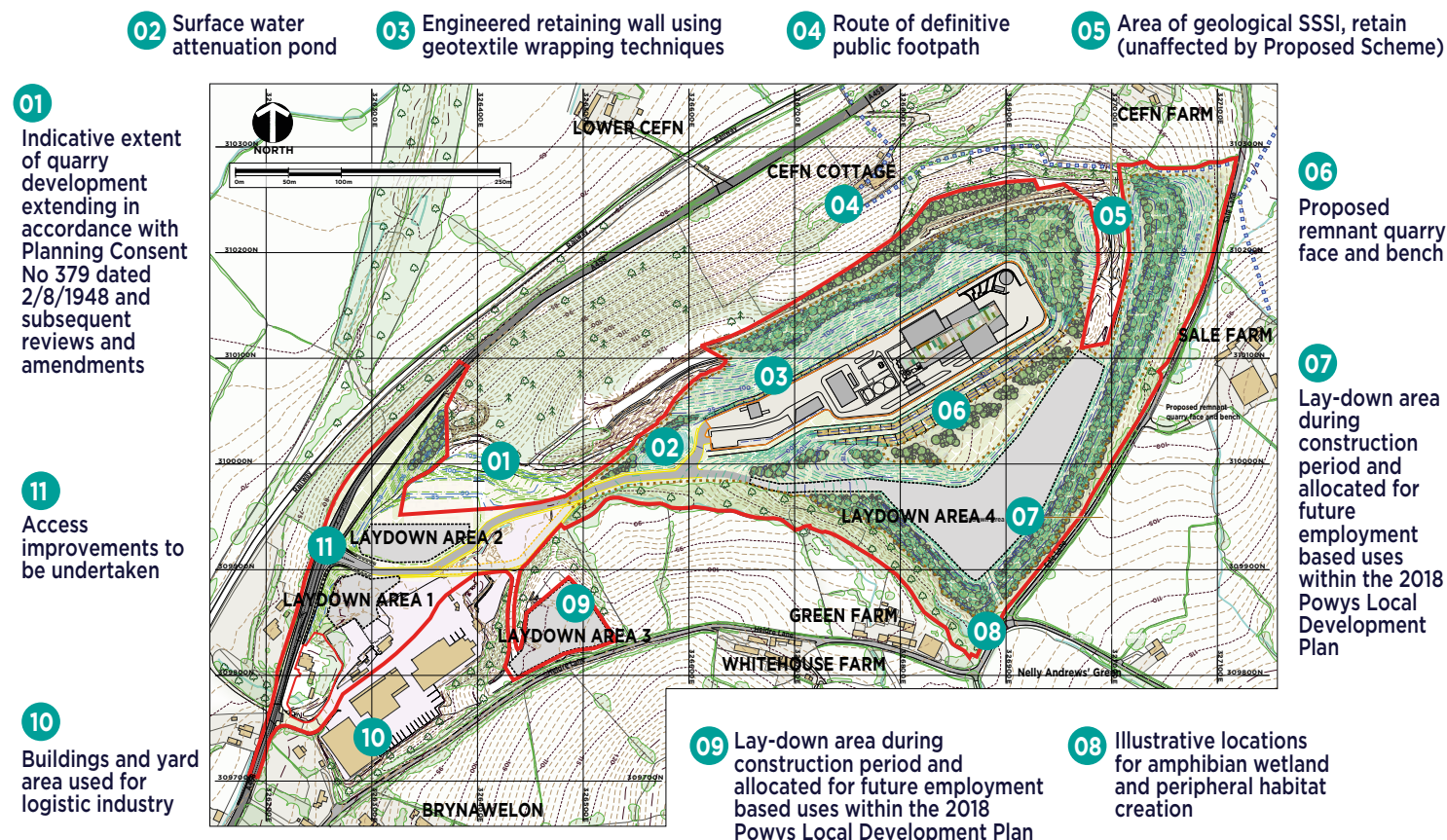
THE ENERGY RECOVERY PROCESS

Buttington Energy Recovery facility has been designed to process up to 167,000 tonnes per year of waste. Non-recyclable waste will be processed and up to 13MW of energy produced.

Once recyclable and compositable materials are removed, the Energy Recovery Facility will use the residual waste (which otherwise would go to landfill) as a resource to recover energy.

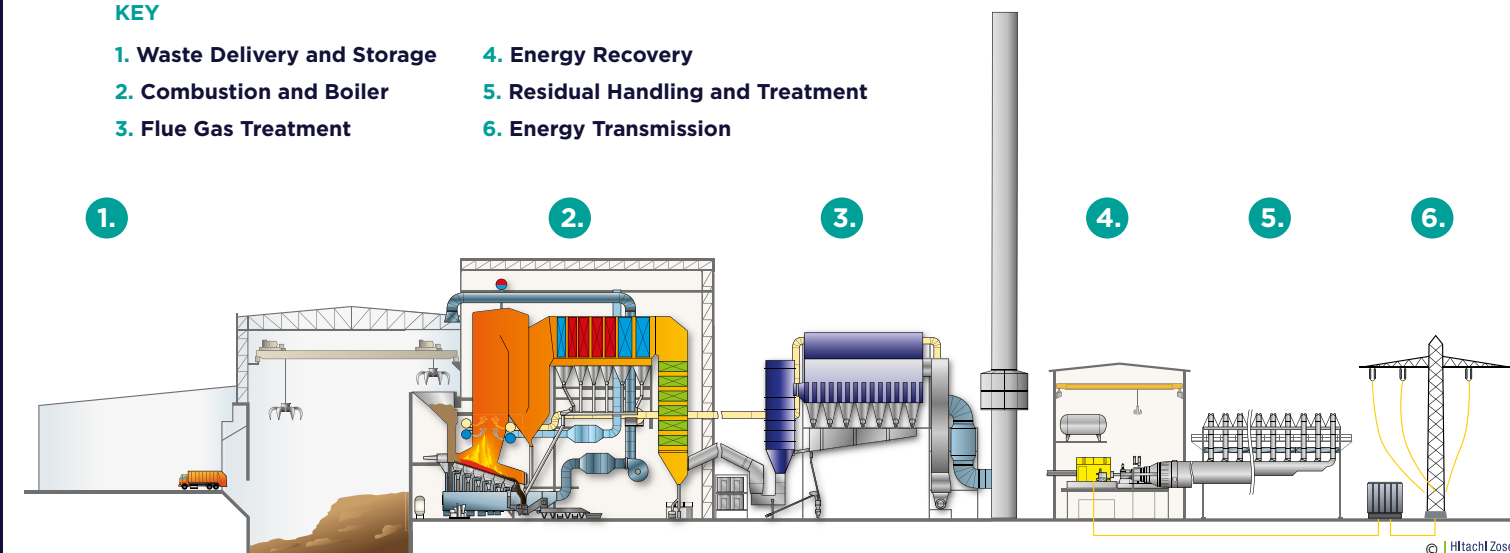
The Energy Recovery Facility will process the residual waste and generate energy in the form of steam. The steam would then drive a turbine which would generate electricity which will be exported to the National Grid.

The management of the Energy Recovery Facility is controlled by strict regulations. These restrictions are in place to ensure emissions released from the stack are tightly monitored. Broad Energy and Hitachi Zosen Inova will work within these limits, and monitoring will be ongoing 24 hours a day.



KEY

1. Waste Delivery and Storage
2. Combustion and Boiler
3. Flue Gas Treatment
4. Energy Recovery
5. Residual Handling and Treatment
6. Energy Transmission



ENVIRONMENTAL IMPACT ASSESSMENT

An Environmental Impact Assessment has been carried out as part of the planning process and an Environmental Statement will be submitted in support of our planning application.

TRANSPORT AND ACCESS

Assessments were carried out on an area which was agreed with the Transport Network Management Division at the Welsh Government Office.

Access to the site would be located at the approved junction to the north east of the existing quarry and industrial area on the A458. Based on the assessment, it is expected that there will be four Heavy Goods Vehicles arriving and four departing the site each operational hour during a typical weekday.

The assessment concludes that the impact of road traffic associated with the Energy Recovery Facility, in all phases of the development would not be significant.

AIR QUALITY

Emissions to air are produced as part of the Energy Recovery Process. Safely managing these is an essential part of the development. An assessment has been carried out to determine the local air quality impacts associated with the emissions from the Buttington Energy Recovery Facility during both the construction and operational phase and emissions from associated vehicle emissions.

The assessment assumed maximum emission levels, which, in practice, are likely to be significantly lower. Local human receptors were carefully considered throughout the assessments, including the school and local residences. The study concluded that there will not be a significant impact on human health, or sensitive habitat sites, there will also not be a significant odour impact.

The proposed stack height of the development will be 70m. An assessment of plume visibility concluded that any visible plumes would only

occur around 30% of the time and for 95% of the time these would remain within the site boundary.

LANDSCAPE / DESIGN

Much thought and consideration has been given to the design of the Energy Recovery Facility and how it sits within the landscape.

The design has utilised existing topography to provide efficient screening of the facility. Excavated soils and clay will be retained to create a peripheral bund around the site where existing screening is limited. In addition, extensive new broadleaf woodland will enhance the sensitive integration of the facility into its surroundings.

The design approach is to develop a facility which:

- Blends sensitively into its landscape as opposed to being a stark iconic building form contrasting with its environment;
- Ensures each elevation is designed to minimise the visual impact of the buildings by using a mix of colours from the selected palette to echo and complement the backdrop of its landscape setting; and
- 'Tuning' the arrangement of coloured panels to suit the landscape setting and backdrop.

NOISE

An assessment has been carried out to determine the potential impact of noise in consultation with Powys County Council.

Assessments included a study of local sensitive receptors. Cumulative noise effects from proposed and existing noise sources in the vicinity of the site have been considered, and it was concluded that no significant increase in noise levels is likely.

In addition, construction noise was also considered, and the assessment showed no significant impacts. The potential impact of noise from road traffic movements as a result of the development also concluded this would not produce any significant change or impact.

HEALTH IMPACT

A Health Impact Assessment was undertaken to determine the health impacts from the development. It has been undertaken using the methodology and tools provided by Wales Health Impact Assessment Support Unit. The Health Impact Assessment also considered recommendations to address identified potential unintended consequences and to also maximise positive health impacts.

The assessment considered both short and long-term impacts of the development which may affect the locality during the construction and operational phases. In response, a number of measures will be implemented which will aim to mitigate the potential health impact. These include a liaison group which will be established with relevant local stakeholders and those with links to the community. This group will act as a bridge between the Buttington Energy Recovery Facility and the local community, allowing concerns to be raised, discussed and resolved.

SOCIO-ECONOMIC

Assessments were carried out in to the potential socio-economic impact of the development. The planning policy review has demonstrated in socio-economic terms the development is in keeping in with local requirements.

Issues explored within the socio-economic assessment included the key demographics of the area; tourism, population density and employment levels. It concluded that there would be no significant negative effect from the introduction of the development to the area. In addition, the development would have a positive impact in terms of employment and supply chain opportunities during operation.

ECOLOGY

Ecological features and the likely effects of the development on them were evaluated and assessed in line with the current best practice guidance for ecology. The assessment was carried out with the admission that the development's footprint is of negligible ecological value with extremely limited scope to support protect species.

A series of mitigation and enhancement measures have been designed into the development proposals. These steps include the creation of approximately two hectares of new, high quality habitat along with a series of dedicated wildlife ponds and new native woodland planting. These measures will ensure no net loss of habitats and an overall increase in habitat quality once established.

THE WATER ENVIRONMENT

The environmental effects analysis for the water environment concluded that there would be no significant residual effects, with the Surface Water Management Plan providing a minor beneficial effect on site drainage (quality and quantity) compared to baseline conditions.

ARCHAEOLOGY AND HERITAGE

An assessment of the sites archaeological assets established that the development has the potential to contain limited artefactual remains of prehistoric, Roman, Saxon, Medieval and Post-Medieval date. It is likely that given the extent of quarrying activities on site, most remains from within the development site boundary have been removed.

It is recognised that a programme of archaeological works may be required to determine the extent and level of existing artefactual remains. Once this programme has been implemented, if required, no further archaeological work will be necessary.

There are no World Heritage Sites, Conservation Areas and Historic Battlefields either within the Development Site or the 5 km study area. Therefore, the development will not impact upon the setting or significance of these designated heritage assets.

GEOTECHNICAL

An assessment of the development site has confirmed the underlying ground conditions and the chemistry of the soils and groundwater. Best practice will be employed during the construction phase of development to ensure that there are no adverse environmental effects. Prior to construction, a Construction Environmental Management Plan will be developed to ensure there are sufficient control measures in place to prevent or control any potential adverse effects on human health and the aquatic environment.

YOUR VIEWS

We want to listen to the issues that are important to you and receive any suggestions you may have.

This pre-application consultation is taking place at a time when face-to-face gatherings are discouraged. It is extremely important to us that anyone and everyone within the community who wants to learn more or share their views can do so.

HOW YOU CAN FIND OUT MORE

- Visit our website:
www.broadenergywales.co.uk/en/buttington-erf (live from 14 September 2020)
- View a webinar: We will be holding two webinars for consultees to be introduced to the scheme and ask questions of the team. Details of these webinars and Zoom registration links are available on the project website
- Email us at: **info@broadenergywales.co.uk**
- Write to us: **FREEPOST, Broad Energy Buttington ERF Consultation, c/o Newgate Communications, Elizabeth House, Greywell Road, Up Nately, RG27 9PR**
- Book an appointment to speak directly by telephone using the contact details below.

Anyone with limited access to the internet can use the dedicated freephone number on **0800 130 3353** to supply their feedback. Every comment received will be logged and form part of the consultation process.

CONTACT US: 0800 130 3353

We are consulting on our proposals between **14 September 2020** and **26 October 2020**.

We encourage you to share your responses before the closing date. Following this, we will collate all feedback received and produce a Consultation Report which must be submitted to the Planning Inspectorate with the application.

CONSULTATION EVENT

We are planning to hold a drop-in session on Thursday 15 October 2020 between 9:00 - 19:00 for those who feel they cannot engage with the project online. This drop-in session will be strictly by appointment only, and tight social distancing measures will be in place. To book a 30-minute slot to speak with members of the client team, please call **0800 130 3353**.

Given the evolving COVID-19 situation, we reserve the right to cancel the event should Welsh Government guidelines change during the Autumn. The health and safety of our staff and that of consultees is the absolute priority for Broad Energy.

WEBINARS

We will be holding two webinars to introduce the scheme and answer questions from consultees. These two webinar sessions will take place on:

Thursday 17 September 2020 - Starting at 18:00

Saturday 10 October 2020 - Starting at 10:00

Details of how to register for these webinars and Zoom registration links are available on the project website.

Thank you for taking the time to be part of our consultation, if you have any questions or queries please do not hesitate to contact us. This booklet is available in Welsh, if you would like a translated version then please contact us using the details supplied.



**PUBLIC CONSULTATION
INFORMATION**

**THE PROPOSED BUTTINGTON
ENERGY RECOVERY FACILITY**

14 SEPTEMBER 2020 - 26 OCTOBER 2020

ALSO AVAILABLE IN WELSH UPON REQUEST

0800 130 3353

info@broadenergywales.co.uk

www.broadenergywales.co.uk